

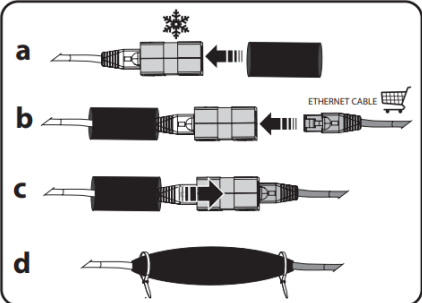
03/2023

# **Mod: SBET\_XC-20**

**Production code: 228724**

# TECHNICAL SHEET

**Doc Nr :** VTX2022\_01  
**Date:** 09/03/2022  
**Issued by:** R&D – Refrigeration/Oven

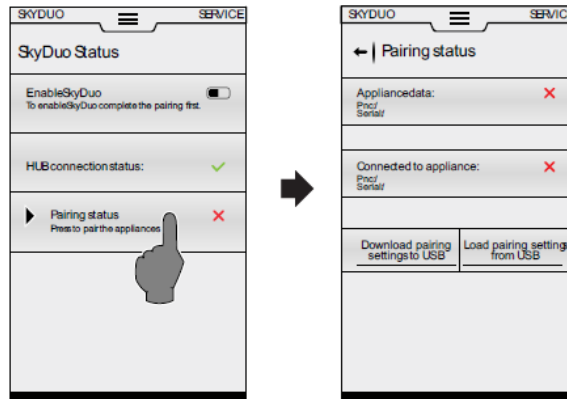
<b>Subject</b>	<b>Sky duo connection</b>	
<b>Model / PNC / Type reference</b>	<b>PNC</b>	<b>model OVEN</b>
	267260	SKYLINE PREMIUMS OVEN 06 GN 1/1 - GAS - 3-GLASS - FOR SKYDUO
	267267	SKYLINE PREMIUMS OVEN 6 GN 1/1 - ELECTRIC - BOILER AISI 316 - 3-GLASS - FOR SKYDUO
	267270	SKYLINE PREMIUMS OVEN 06 GN 1/1 - GAS - BOILER AISI 316 - 3-GLASS - FOR SKYDUO
	267276	SKYLINE PREMIUMS OVEN 06 GN 1/1 - ELECTRIC - 85MM PITCH - 3-GLASS - FOR SKYDUO
	267290	SKYLINE PREMIUMS OVEN 06 GN 1/1 - ELECTRIC - 3-GLASS - FOR SKYDUO
	267262	SKYLINE PREMIUMS OVEN 10 GN 1/1 - GAS - 3-GLASS - FOR SKYDUO
	267268	SKYLINE PREMIUMS OVEN 10 GN 1/1-ELECTRIC - BOILER AISI 316 - 3-GLASS - FOR SKYDUO
	267272	SKYLINE PREMIUMS OVEN 10 GN 1/1 - GAS - BOILER AISI 316 - 3-GLASS - FOR SKYDUO
	267277	SKYLINE PREMIUMS OVEN 10 GN 1/1 - ELECTRIC - 85MM PITCH - 3-GLASS - FOR SKYDUO
	267292	SKYLINE PREMIUMS OVEN 10 GN 1/1- ELECTRIC - 3-GLASS - FOR SKYDUO
	<b>PNC</b>	<b>Model BCF</b>
	725076	SKYLINE CHILLS BLAST CHILLER FREEZER 30/30KG 6 GN 1/1 - TOWER - FOR SKYDUO
725077	SKYLINE CHILLS BLAST CHILLER FREEZER 50/50KG 10 GN 1/1 - FOR SKYDUO	
<b>Action in Factory</b>	This unit above are already predisposed with connection only to Sky Duo without use the NIU (Wifi or Pro E) and HUB (922705-922697) and kit installation already installed.	
<b>Action in Field</b>	<p>Following the instruction 595403N01 ONLY paragraph B to make a pairing. The <b>only</b> condition to do is connect a cable Ethernet from bcf to oven in the female that is is already predisposed.(instruction 595404Q00 present on board)</p> 	
<b>Spare parts</b>	The spc of complete UI is 0CK685 (ASS. Touch UI Elux with Ethernet direct Connection) to install the last SW available in web	

Here below the extract of instruction 595403N01 relative to only to pairing between Oven and BCF.

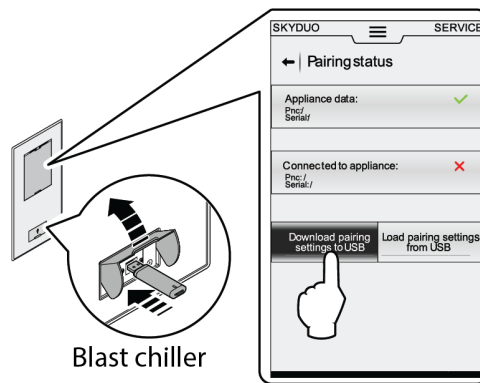
# TECHNICAL SHEET

## Pairing bcf to oven

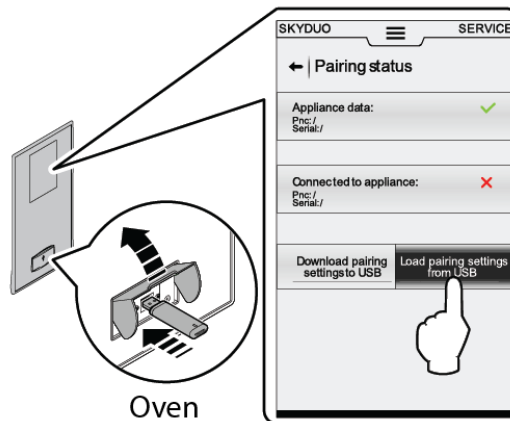
1. Enter in the environment Skyduo (if the icone is not present in bar menu go to in accessory and active the flag SKY DUO.)



3. Enter in pairing status
4. Insert a USB pen drive into the corresponding socket of the bcf and touch the button to download the information for pairing the blast chiller with the oven

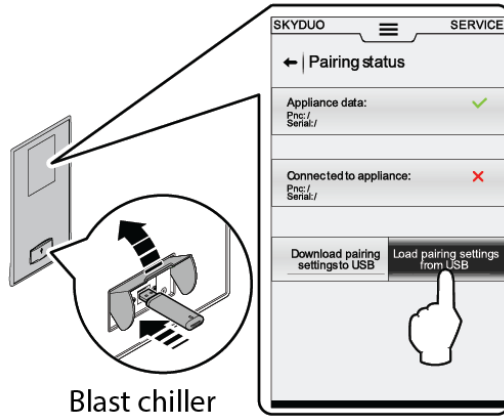


6. Repeat the same procedure for the oven to skyduo and insert the usb



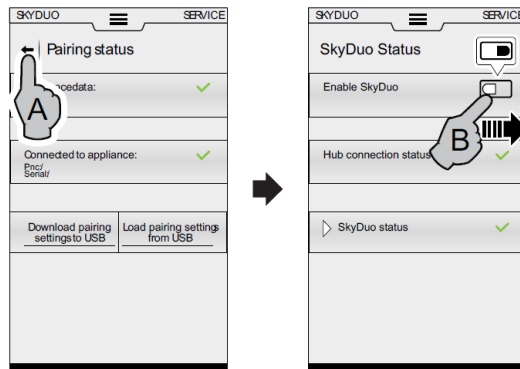
8. Touch the button to upload the information to complete the pair of the bcf with the oven
9. Remove, again, the USB pen drive from the oven and insert it into bcf socket on chiller. Touch the button to upload the information to complete the pair of the oven with the blast chiller.

# TECHNICAL SHEET



10. Blast chiller

11. Now both unit are pair, information of both pnc are visible on screen



12.

13. If necessary active the button