

01/2019

# **Mod: G22/F23A4-S**

**Production code: 393331**



**Diamond**  
catering equipment

# Modular Cooking Range Line ECO 90 One Well Gas Fryer 23 liter

ITEM # \_\_\_\_\_

MODEL # \_\_\_\_\_

NAME # \_\_\_\_\_

SIS # \_\_\_\_\_

AIA # \_\_\_\_\_



**393331 (N9KKGABAMCA)** 23-lt gas fryer with 1 "V" shaped well (external burners) and 2 half size baskets

## Short Form Specification

**Item No.** \_\_\_\_\_

High efficiency 20 kW burners in stainless steel. Suitable for natural gas or LPG. Deep drawn V-Shaped well. Oil drains through a tap into a container positioned under the well. Height adjustable feet in stainless steel. Exterior panels in stainless steel. Worktop in 20/10, stainless steel. Right-angled side edges eliminate gaps and possible dirt traps between units.

**APPROVAL:** \_\_\_\_\_

## Main Features

- Deep drawn V-Shaped well.
- High efficiency 20 kW burners in stainless steel with flame failure device attached to the outside of the well.
- Thermostatic regulation of oil temperature up to a maximum of 190 °C.
- Flame failure device on each burner.
- Overheat protection thermostat as standard on all units.
- All major compartments located in front of unit for ease of maintenance.
- Piezo spark ignition for added safety.
- IPX5 water resistance certification.
- The special design of the control knob system guarantees against water infiltration.
- Supplied as standard with 2 half size baskets and 1 right side door for cupboard.

## Construction

- All exterior panels in Stainless Steel with Scotch Brite finishing.
- Model has right-angled side edges to allow flush fitting joints between units, eliminating gaps and possible dirt traps.
- Interior of well with rounded corners for ease of cleaning.
- Unit is 900mm deep to give a larger working surface area.
- Unit delivered with four 50 mm legs in stainless steel as standard.

## Included Accessories

- 1 of Door for open base cupboard PNC 206350
- 1 of 2 half size baskets for 18/23 lt fryers PNC 927223

## Optional Accessories

- OIL FILTER S/S FOR 23 LT FRYERS PNC 200086
- Junction sealing kit PNC 206086
- Draught diverter, 120 mm diameter PNC 206126
- Matching ring for flue condenser, 120 mm diameter PNC 206127
- Kit 4 wheels - 2 swivelling with brake - it is mandatory to install base support and wheels PNC 206135
- Flanged feet kit PNC 206136
- Pair of side kicking strips (not for refr-freezer base) PNC 206180
- Hygienic lid for 23lt fryers PNC 206201
- Frontal kicking strip for 23lt fryers in two parts PNC 206203
- Extension pipe for oil drainage for fryers PNC 206209
- Chimney upstand, 400mm PNC 206303
- Flue condenser for 1/2 module, 120 mm diameter PNC 206310

## Modular Cooking Range Line ECO 90 One Well Gas Fryer 23 liter

- Base support for feet or wheels (lateral) for 23lt PNC 206372   
fryers, pastacookers and refrigerated bases
- Chimney grid net, 400mm (700/900 line) PNC 206400
- SEDIMENT TRAY FOR 23LT FRYER PNC 921023
- 2 half baskets for 18/23lt fryers with front hook PNC 927200
- 1 full basket for 18/23lt fryers with front hook PNC 927201
- 2 half size baskets for 18/23 lt fryers PNC 927223
- Pressure regulator for gas units PNC 927225
- 1 full size basket for 18/23 lt fryers PNC 927226
- Unclogging rod for 23lt fryers drainage pipe PNC 927227
- Deflector for floured products for 23lt fryers PNC 960645



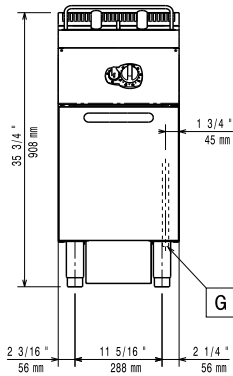
**Modular Cooking Range Line  
ECO 90 One Well Gas Fryer 23 liter**

The company reserves the right to make modifications to the products without prior notice. All information correct at time of printing.

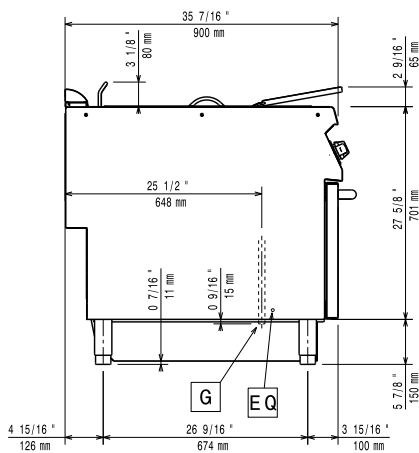
2018.08.03

# Modular Cooking Range Line ECO 90 One Well Gas Fryer 23 liter

**Front**

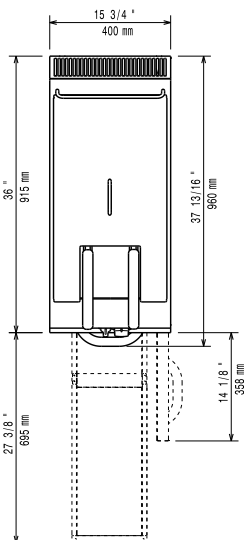


**Side**



**EQ** = Equipotential screw  
**G** = Gas connection

**Top**



## Gas

### Gas Power:

393331 (N9KKGABAMCA) 68180 Btu/hr (21 kW)

### Gas Type Option:

LPG; Natural Gas

### Gas Inlet:

1/2"

## Key Information:

<b>Usable well dimensions (width):</b>	340 mm
<b>Usable well dimensions (height):</b>	575 mm
<b>Usable well dimensions (depth):</b>	400 mm
<b>Well capacity:</b>	21 lt MIN; 23 lt MAX
<b>Thermostat Range:</b>	120 °C MIN; 190 °C MAX
<b>Shipping weight:</b>	75 kg
<b>Shipping height:</b>	1080 mm
<b>Shipping width:</b>	460 mm
<b>Shipping depth:</b>	1020 mm
<b>Shipping volume:</b>	0.51 m <sup>3</sup>

If appliance is set up or next to or against temperature sensitive furniture or similar, a safety gap of approximately 150 mm should be maintained or some form of heat insulation fitted.



Modular Cooking Range Line  
ECO 90 One Well Gas Fryer 23 liter  
The company reserves the right to make modifications to the products without prior notice. All information correct at time of printing.