

07/2018

Mod: SALP2/R6

Production code: 39130641000 / GSS920I



Diamond
catering equipment



SS920-I Sandwich Preparation Counter GN1/1

Product features:

- Stainless steel 304
- Cooling well for GN1/6 pans
- Fan assisted cooling
- Automatic defrost
- 2 doors
- Adjustable legs



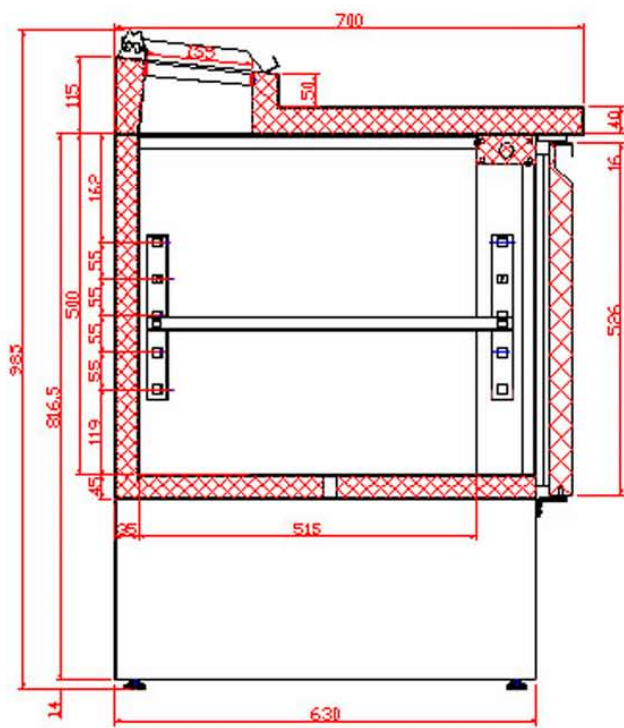
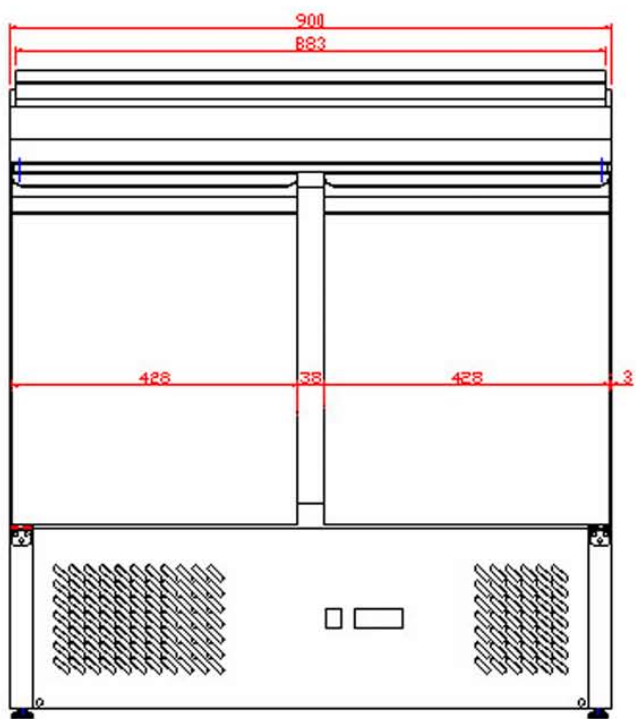
GN1/6 cooling well



Drawers as option

Technical data

Climate Class	4
Temperature Range, °C	2 to 10
Gross Volume, l.	228
Net. Volume, l.	201
External Dimensions, WxDxH	900x700x(930-950)
Internal Dimensions, WxDxH	830x515x500
Packing Dimensions, WxDxH	980x770x1170
40'ft Container load, pcs.	72
Doors	2 hinged solid
Shelves	2, GN1/1
Exterior	SS304
Interior	SS304
Castors/Feet	4 adjustable feet
Lock	No
Voltage/Frequency, V/Hz.	220-240/50
Rated Input Power, W.	155
Energy Consumption. kWh/24h.	2
Gross Weight, kg.	94
Net. Weight, kg.	72
Noise Level, db(A)	42
Type of Cooling	Fan assisted
Type of Defrost	Automatic
Type of Control	Electronic
Thermometer	Yes
Refrigerant	R600a
Charge, g.	68



Size of GN-Pans.

