

06/2012

# Mod: **C6GFA11-SP**

Production code: **BC6SFA77**



**Diamond**  
catering equipment

# 700 Eco Line - Gas Ranges

The **700 ECO-LINE** ranges are designed and produced to offer reliable, easy to use and easy to clean machines, at an affordable price.

## RANGE

The **GAS RANGE** comprises 4 models with 4 or 6 burners, on open cupboard or on GN 2/1 static gas oven. The pressed worktop is made in AISI 304 stainless steel, with rounded corners, watertight to avoid liquid or dirt infiltration and to ease cleaning operations.



**C4SA77**



**C4SF77**



**C6SA77**



**C6SFA77**

	Burners		Oven	Power Tot	Dimensions	Oven dim.	Gross weight
	3,5 kW	6 kW	6 kW	kW	L x W x H cm	L x W x H cm	Kg
<b>C4SA77</b>	2	2		19	70 x 71,7 x 85		65
<b>C4SF77</b>	2	2	•	25	70 x 71,7 x 85	56 x 66 x 31	95
<b>C6SA77</b>	3	3		28,5	110 x 71,7 x 85		90
<b>C6SFA77</b>	3	3	•	34,5	110 x 71,7 x 85	56 x 66 x 31	120

## TECHNICAL FEATURES

### HOBS

- Gas hobs with 4 or 6 burners
- Watertight pressed worktop in AISI 304 stainless steel, with rounded corners
- Burners in chromium plated cast iron and brass burner ring, self-stabilized flame, extractable
- Pan grids in chromed iron
- Stainless steel external structure
- Pilot flame, safety valve fitted cocks with thermocouples
- Stainless steel feet, adjustable from 15cm to 20cm

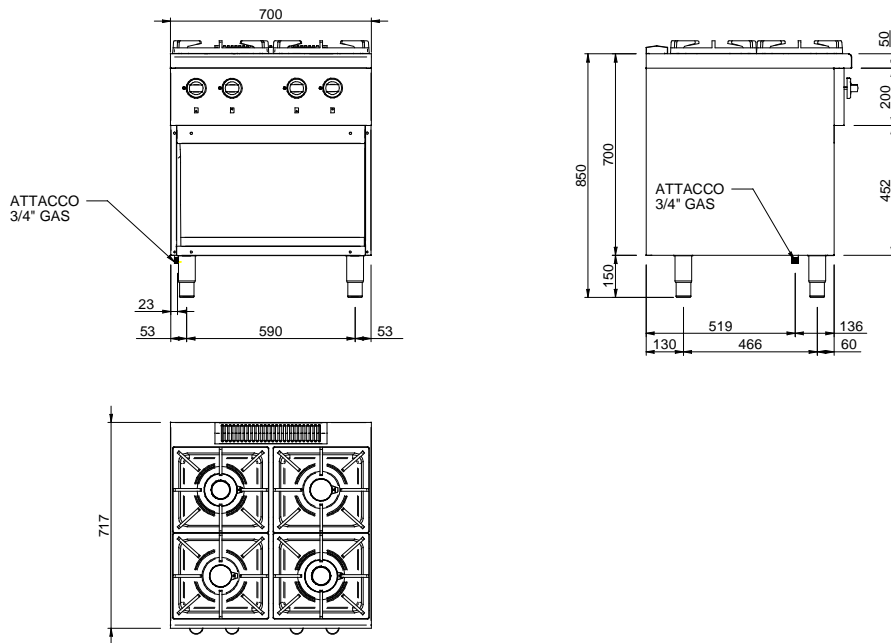
### OVEN

- Static gas oven with thermostatic temperature regulation with safety valve and thermocouple
- Automatic ignition with pilot burner and piezo-electric device
- Gas burners with self-stabilized flame
- Stainless steel cooking chamber, with enameled base and GN2/1 capacity.
- stainless steel double-wall door with insulating casing
- Stainless Steel Chimney

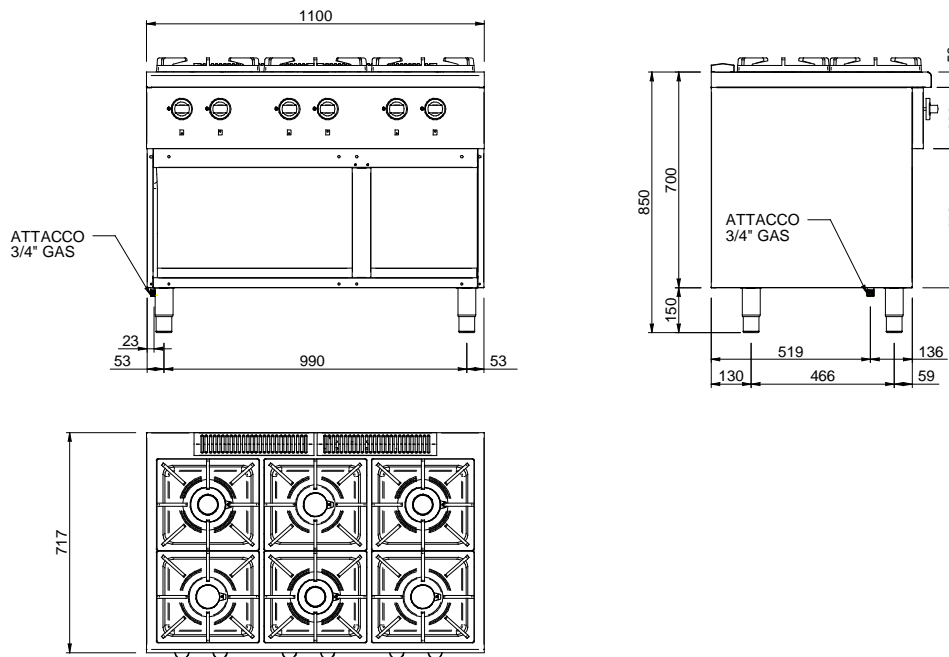
### OPTIONAL

- Plinth
- Castors

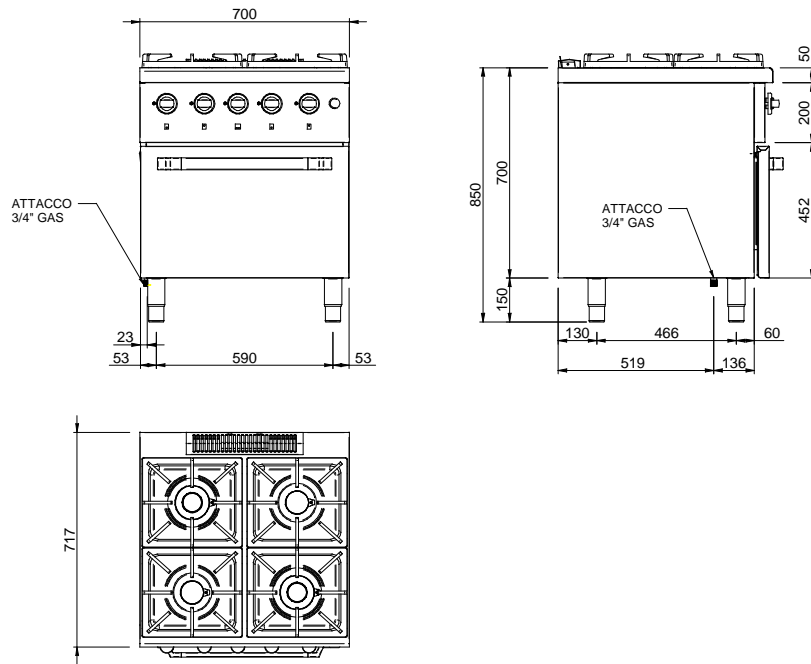
# C4SA77



# C6SA77



## C4SF77



## C6SA77

