

06/2012

Mod: C6GA11-SP

Production code: BC6SA77



Diamond
catering equipment

700 Eco Line - Gas Ranges

The **700 ECO-LINE** ranges are designed and produced to offer reliable, easy to use and easy to clean machines, at an affordable price.

RANGE

The **GAS RANGE** comprises 4 models with 4 or 6 burners, on open cupboard or on GN 2/1 static gas oven. The pressed worktop is made in AISI 304 stainless steel, with rounded corners, watertight to avoid liquid or dirt infiltration and to ease cleaning operations.



C4SA77



C4SF77



C6SA77



C6SFA77

	Burners		Oven	Power Tot	Dimensions	Oven dim.	Gross weight
	3,5 kW	6 kW	6 kW	kW	L x W x H cm	L x W x H cm	Kg
C4SA77	2	2		19	70 x 71,7 x 85		65
C4SF77	2	2	•	25	70 x 71,7 x 85	56 x 66 x 31	95
C6SA77	3	3		28,5	110 x 71,7 x 85		90
C6SFA77	3	3	•	34,5	110 x 71,7 x 85	56 x 66 x 31	120

TECHNICAL FEATURES

HOBS

- Gas hobs with 4 or 6 burners
- Watertight pressed worktop in AISI 304 stainless steel, with rounded corners
- Burners in chromium plated cast iron and brass burner ring, self-stabilized flame, extractable
- Pan grids in chromed iron
- Stainless steel external structure
- Pilot flame, safety valve fitted cocks with thermocouples
- Stainless steel feet, adjustable from 15cm to 20cm

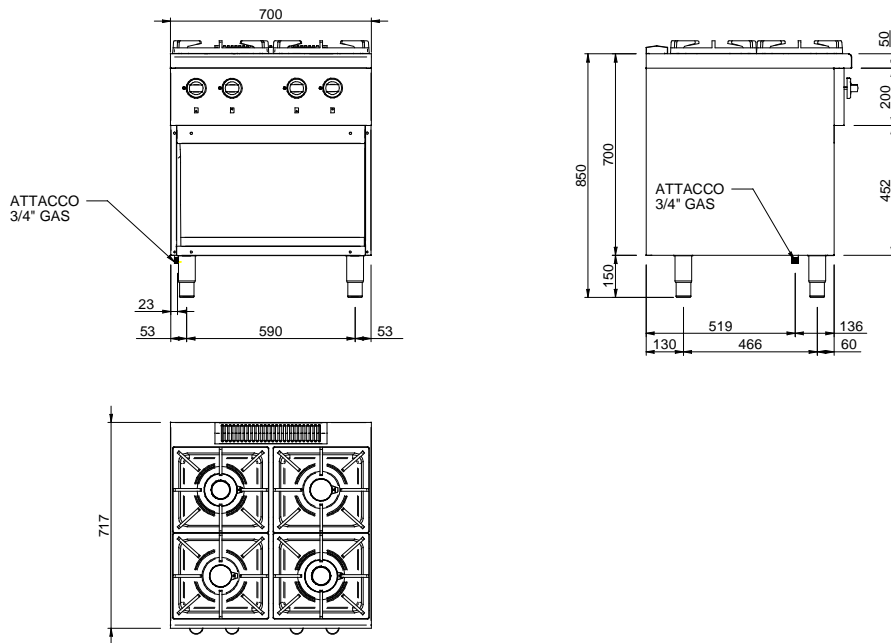
OVEN

- Static gas oven with thermostatic temperature regulation with safety valve and thermocouple
- Automatic ignition with pilot burner and piezo-electric device
- Gas burners with self-stabilized flame
- Stainless steel cooking chamber, with enameled base and GN2/1 capacity.
- stainless steel double-wall door with insulating casing
- Stainless Steel Chimney

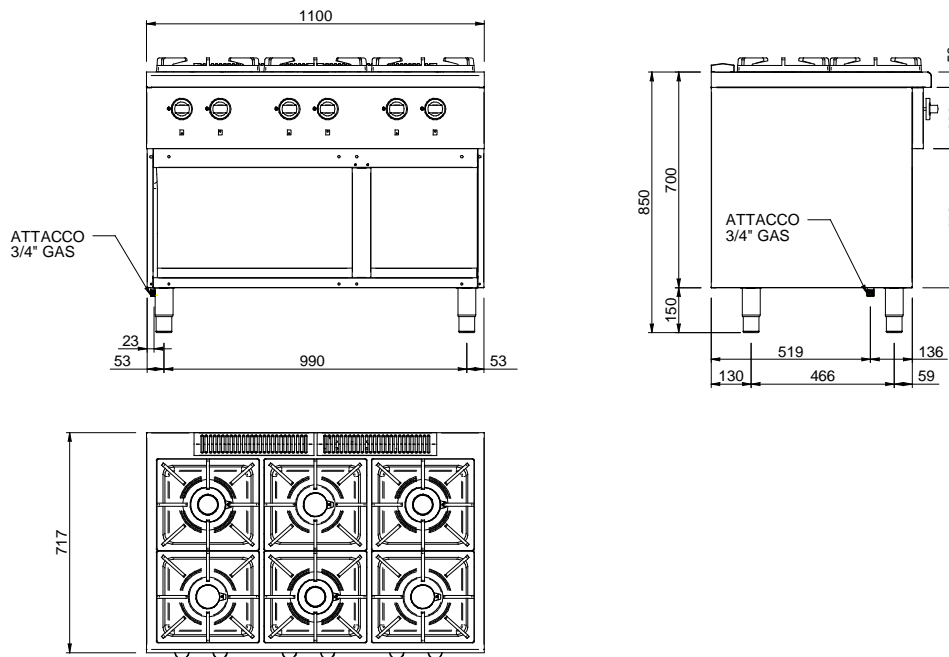
OPTIONAL

- Plinth
- Castors

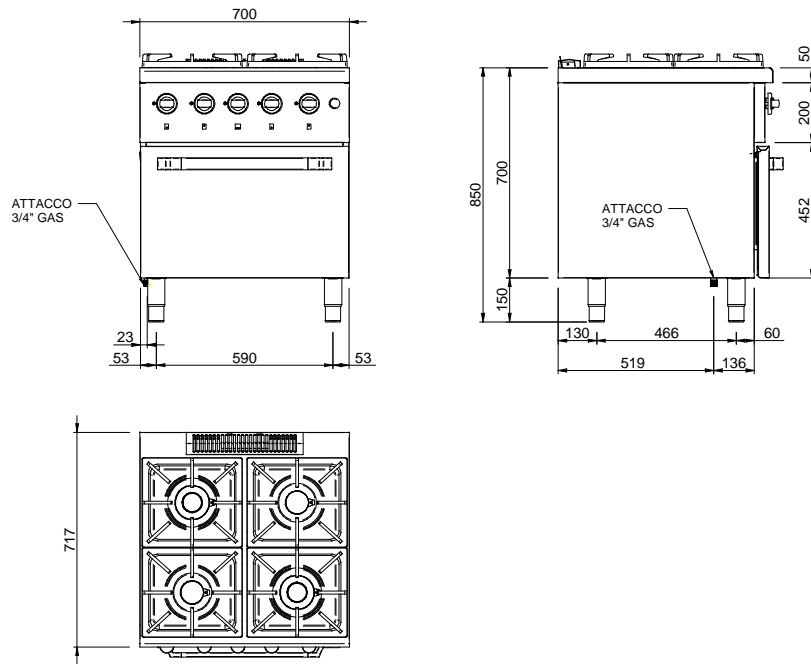
C4SA77



C6SA77



C4SF77



C6SA77

